

TI300PTZ-S | TI600PTZ-S

Online Monitoring Thermal Imaging Pan&Tilt

TI300PTZ-S | TI600PTZ-S integrates thermal imaging camera, CCD camera and 360° continuous rotating pan&tilt. It is suitable for 24h/365d temperature monitoring for machinery, electronic equipment and flammable materials; it can detect potential dangers and automatically alarm timely so as to ensure the safety.

Features

Visible light and infrared light

Multiple presets for long-term operation

Full working environment design,

Anti-shock, anti-corrosion, dustproof and water proof, IP66

Integrated design, compact and reliable

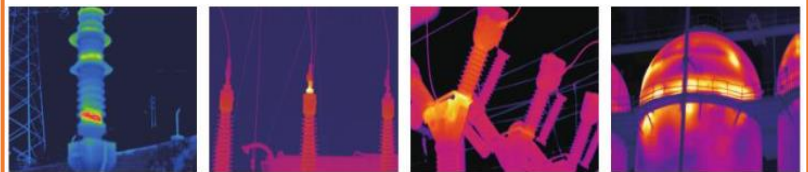


Applications

Robot, power transformer station/transformer, high voltage switchgear, control room, high voltage electrical connector

Mechanical, chemical, flammable materials, safe production

Equipment, metallurgy



ULIRVISION

Technical Specifications

Item	TI300PTZ-S	TI600PTZ-S		
Detector Data				
Type	Uncooled FPA			
IR resolution	384×288	640×480		
Pixel pitch	17μm			
Spectral range	7.5~14μm			
NETD/Sensitivity	60mK	40mK		
Infrared Lens				
Lens	Standard 15mm lens 6.2mm optional	Standard 25mm lens 13mm optional		
FOV	Standard lens 24°× 18° Optional lens 55°× 43°	Standard lens 24°× 18° Optional lens 45°× 35°		
Minimum imaging distance	50cm			
IFOV	1.13mrad	2.74mrad	0.68mrad	1.3mrad
Focus	Motor, support auto focus			
Infrared Measurement				
Temp range	-20℃~+250℃ (Scalable to 650℃)			
Measurement accuracy	±2℃/±2%(Reading range), take the maximum			
Temp measurement mode	Spot measure, box measure, highest temp			
Measurement correction	Auto/Manual			
Palette	Black hot, white hot, rainbow, iron red			
Electronic zoom	2X, 4X			
CCD Video Camera				
Lens focal length	F4.3-129.0mm(more focal lengths are optional)			
Resolution	1920×1080, max support 2048x1536			
Signal system	PAL/NTSC			
Sensor type	1/2.8" Progressive Scan CMOS			
Zoom	30X optics, 12X digital			
Minimum illumination	0.05Lux			
SNR	>50dB			
Electronic image stabilization	ON/Off			
Pan & Tilt				
Horizontal range	0°~360°			
Horizontal speed	0.01°~30°/s			
Vertical range	-90°~90°			
Vertical speed	0.1°~15°/s			
Presetting amount	200			
Repositioning accuracy	±0.1°			
Interface				
Video output	Thermal image analog video, network video			
Control	RS485			
Protocol	PECLO-D			
Baud rate	2400-4800-9600bps auto recognition			

Network	
Type	1000Mbps
Network protocol	IEEE802.3
Connector interface	RJ-45
Communication protocol	IEC60807-5-104、IEC61850
Power System	
Working voltage	DC: 24V
Power consumption	Static 10W; dynamic23W
Environment Parameters	
Operating temperature range	-25℃~+50℃
Storage temperature range	-40℃~+70℃
Encapsulation	IP66
Vibration protection	Horizontal 9G, vertical15G
Physical data	
Size	348mm×200mm×200mm
Weight	≤5kg
Packing	
Standard	Thermal Imaging Pan&Tilt, user manual, warranty card, packing box, USB flash drive