

T100

Thermal Imaging Camera

T100 is the latest expert-level thermal imaging camera of ULIRVISION. Product adopts 1024×768 high-pixel aSi microthermal detector, manual & auto integrated lens, 180° rotation, laser assisted focusing, excellent imaging quality, and meets the strict requirements of industrial market for high-end thermal camera.

Features

1024×768 Uncooled detector

Continuous auto focusing | laser assisted focusing

Automatic lens recognition, 180 ° rotation

Infrared | Visible Light | PIP | DSX, multiple image modes

Multiple measure modes: high and low temp auto tracking, line temp measure, isothermal analysis, area temp measure

5.5" Touch screen, HD viewfinder, clearly visible in the sun

GPS, compass azimuth information is saved with the image

Applications

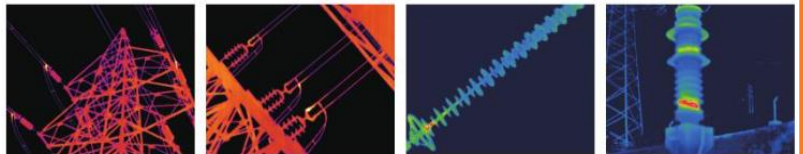
Building Diagnostics

Electrical/Mechanical Inspection

Research & Development

Automation Applications

Preventative & Predictive Maintenance



Technical Specifications

Item	T100
Detector Data	
Type	Uncooled FPA
IR resolution	1024×768
Pixel pitch	17μm
Spectral range	7.5 ~ 14μm
NETD/Sensitivity	25mK
Lens Data	
FOV	28°×21°
Minimum imaging distance	0.5m
I FOV	0.48mrad
Focus	Manual/Motor/Continuous autofocus/Laser assisted focusing
Lens recognition	Automatic
Lens(optional)	45°×33°, 12°×9°, 7°×5.3°
lens rotation	180° rotation
Image Performance	
Display	HD 5.5" touch AMOLED , 1920×1080
Viewfinder	0.5" color OLED display, supporting manual zoom, 1920×1080
Visual camera	13 megapixel CMOS, autofocus, LED fill light
Frequency	50Hz/60Hz
Amplification	1X ~ 35X continuous
Palette	12 palettes (including iron red, rainbow, black hot and white hot, etc.)
Brightness	Auto/Manual
Measurement	
Temperature range	-20℃~+600℃(can be extended to 1700℃)
Measurement accuracy	5℃ ~ 150℃, accuracy is ±1℃ or ±1% of reading; for other temperature ranges, the accuracy is ±2℃ or ±2% of reading, take the larger value
Measurement mode	Real-time 20 movable spots, 10 movable rectangular areas and 10 circular areas (max./min. temp capture, avg. temp measure), 10 movable line temp measure, isothermal analysis, temp difference measure, temp alarm (sound, color)
Measurement correction	Auto/Manual
Emissivity correction	Adjustable from 0.01 to 1.0 or selected from list of materials
Background temperature correction	Auto (according to the input background temp)
Atmospheric transmissivity correction	Auto (according to the input distance, relative humidity, ambient temp)
Setting function	Date/time, temp unit °C/°F/K, language
Alarm	
Sound and light alarm	Yes
Image storage	
Memory card	64G

ULIRVISION

Single frame infrared image format	JPEG, with 14-Bit measured data image
Text annotation	Support 30 preset text annotations(editable)
Voice annotation	60s voice record, stored with per image via built-in microphone
Laser	
Laser type	Class 2, 1mW, 650nm red
Laser Ranging	Measuring distance: 0.2m-50m
Interface	
Power interface	Yes
SD card slot	Yes
Video output	HDMI
Audio output	Yes
USB	USB TypeC: Data transmission, radiometric video streaming
WIFI	Yes
Bluetooth	Yes
GPS	Yes
Compass	Yes
Tripod	1/4" -20
Power System	
Battery type	Lithium battery (rechargeable)
Battery operating time	4h continuous (room temperature)
External power	DC: 5V
Charging type	Two-seater charger or in camera
Power saving	Yes
Environment Parameters	
Operating temperature range	-20°C~+50°C
Storage temperature range	-40°C~+70°C
Humidity	≤95%(non-condensing)
Vibration	2G(IEC60068-2-6)
Shock	25G(IEC60068-2-29)
Protection level	IP54(IEC60529)
Physical data	
Size	183mm×160mm×88mm
Weight	<1.6kg(with battery and standard lens)
Packing	
Standard	Thermal imaging camera, 2 lithium batteries, battery charger, adapter, USB cable, SD card, HDMI cable, SD card reader, USB flash drive, warranty card, calibration book, carrying case, user manual
Quality assurance	
CE	Yes

ULIRVISION